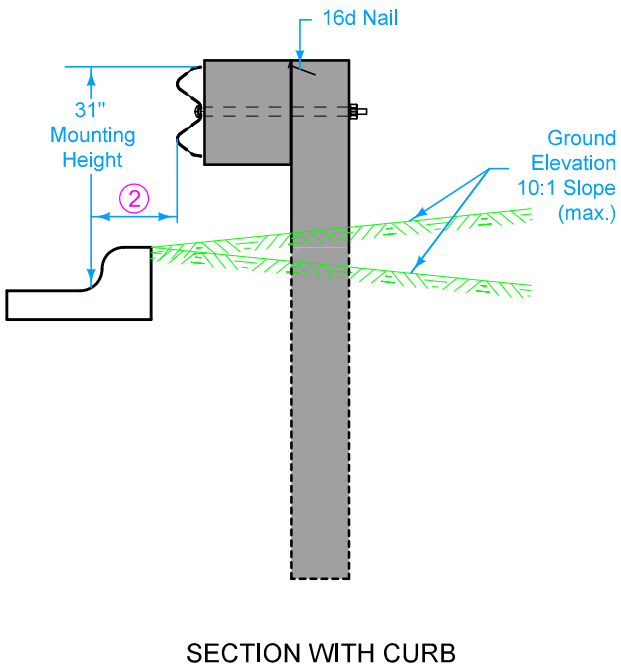
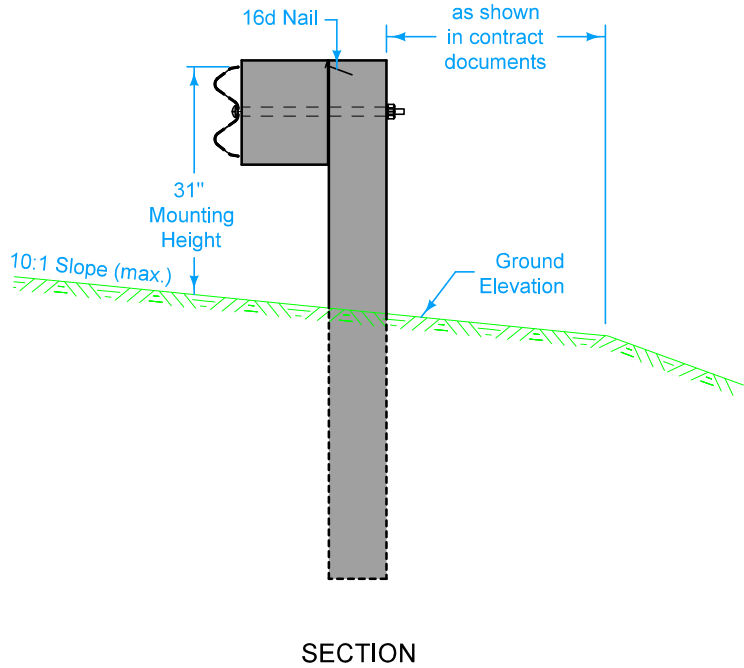
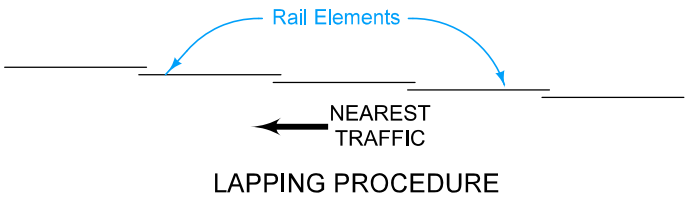




At Bridge End Drains, cut Scour Protection (Transition Mat and Turf Reinforcement Mat) or remove rock as required to place post(s) such that Bridge End Drains abut post(s).

- ① When specified by the contract documents, install posts at 3'-1 1/2" spacing.
- ② 6" maximum for 6" Standard or 6" Sloped curbs and for non-standard curbs.
- ③ Wood or composite only. Steel blockouts will not be allowed.

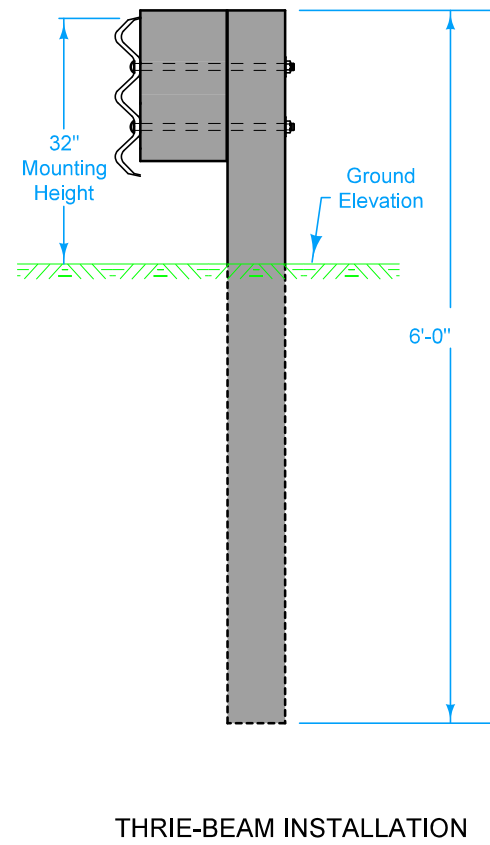
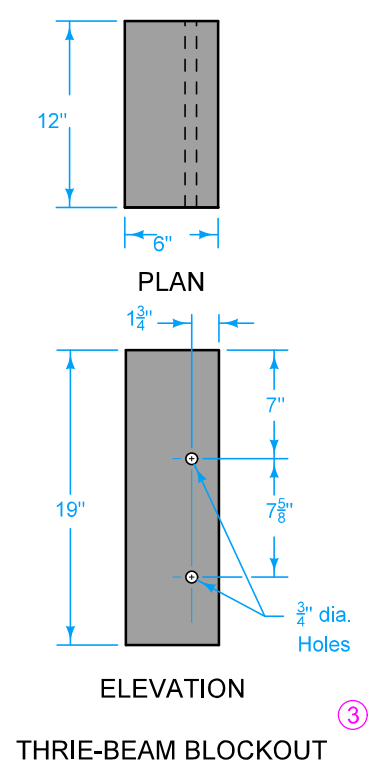
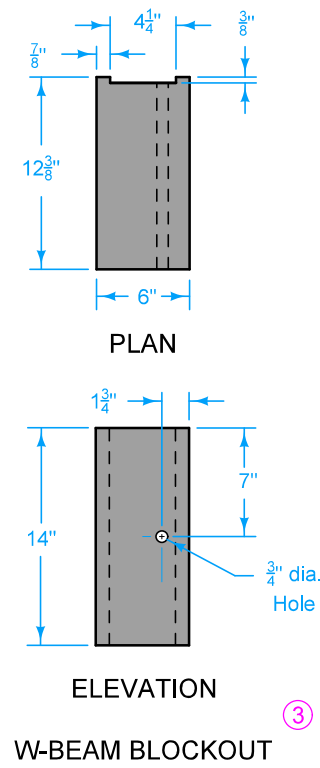
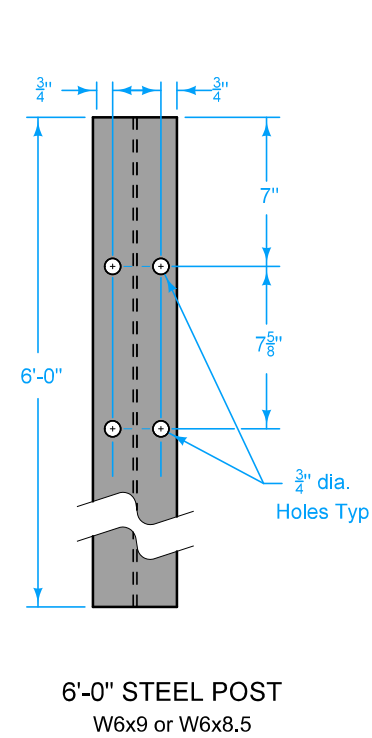


W-BEAM INSTALLATION

Possible Contract Item:  
Steel Beam Guardrail

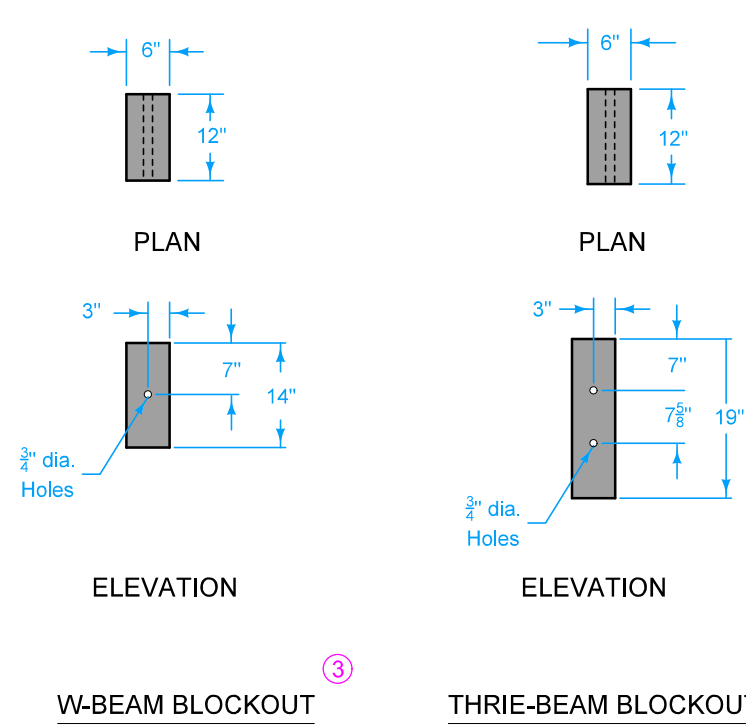
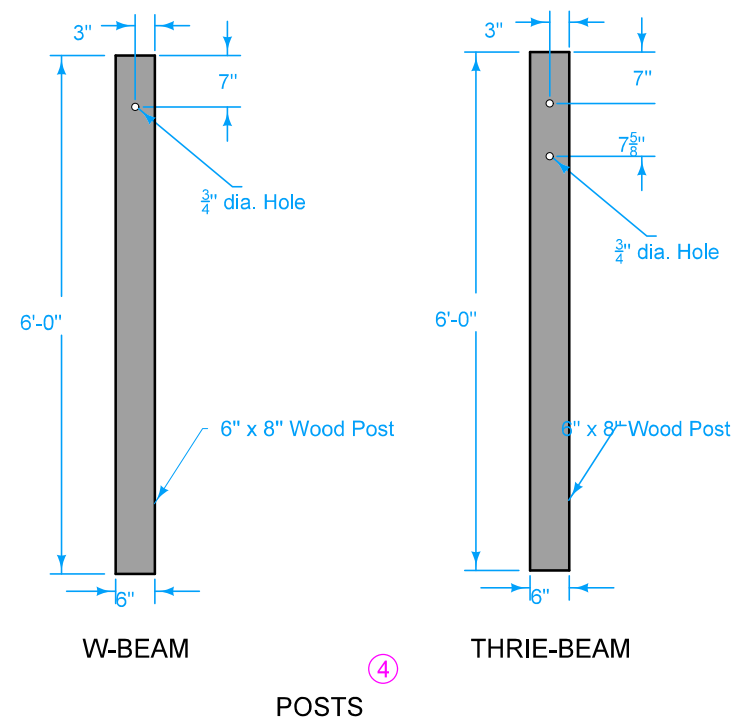
 IOWA   DOT	REVISION	
	8	04-21-26
	BA-200	
STANDARD ROAD PLAN		
SHEET 1 of 4		
REVISIONS:      Added SYMMETRICAL TRANSITION SECTION detail.		
		
APPROVED BY DESIGN METHODS ENGINEER		
STEEL BEAM GUARDRAIL COMPONENTS		

STEEL POST AND BLOCKOUT DETAILS

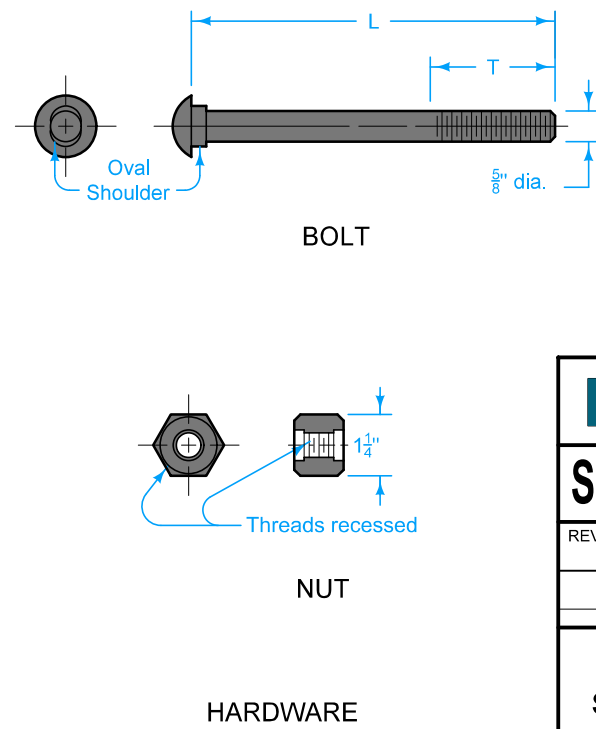


- ③ Wood or composite only. Steel blockouts will not be allowed.
- ④ Thrie-beam post may be substituted for W-beam post.

WOOD POST AND BLOCKOUT DETAILS



BOLT DETAILS



APPLICATION	T	L
Splice Bolt	1 1/16"	1 1/4"
Bolt for Steel Post with 8" Blockout	2 1/2"	10"
Bolt for Steel Post with 12" Blockout	2 1/2"	14"
Bolt for Wood Post with 8" Blockout	2 1/2"	18"
Bolt for Wood Post with 12" Blockout	2 1/2"	22"

T = Min. Thread Length      L = Bolt Length

**IOWA DOT**

**STANDARD ROAD PLAN**

REVISIONS: Added SYMMETRICAL TRANSITION SECTION detail.

APPROVED BY DESIGN METHODS ENGINEER

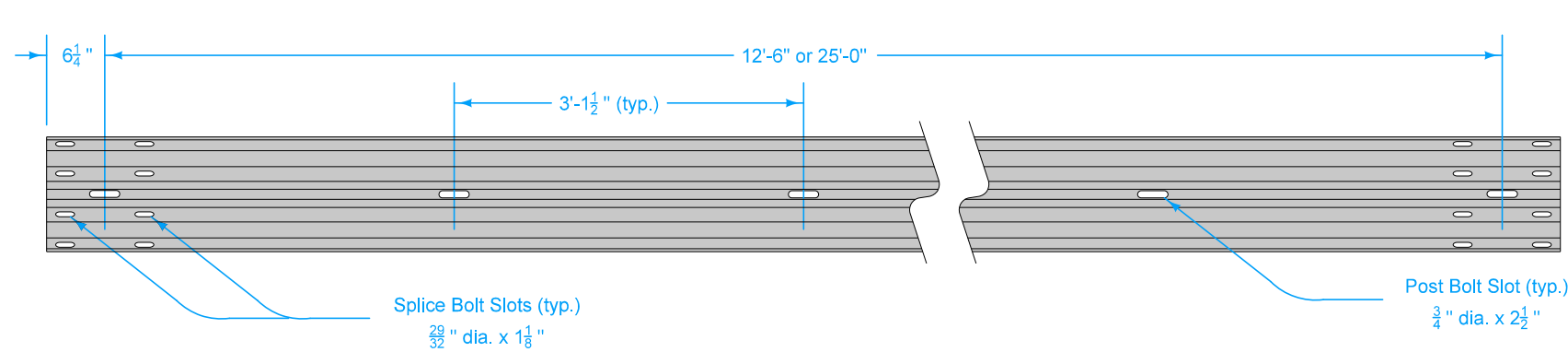
REVISION

8    04-21-26

**BA-200**

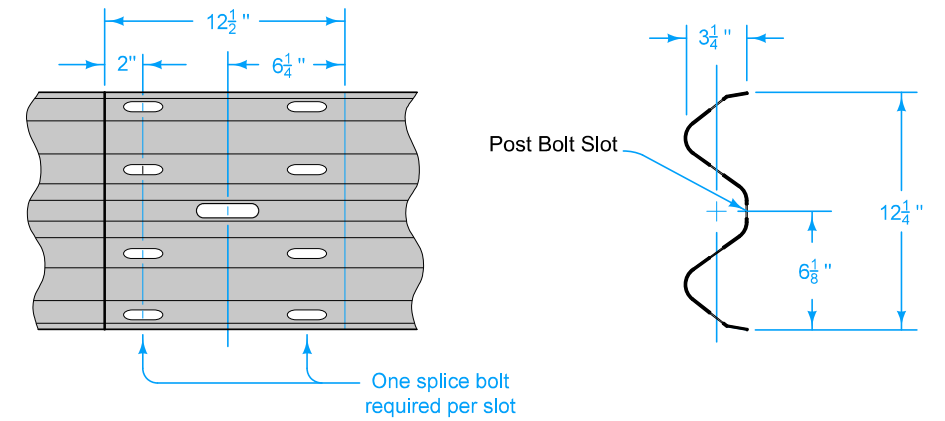
SHEET 2 of 4

**STEEL BEAM GUARDRAIL COMPONENTS**



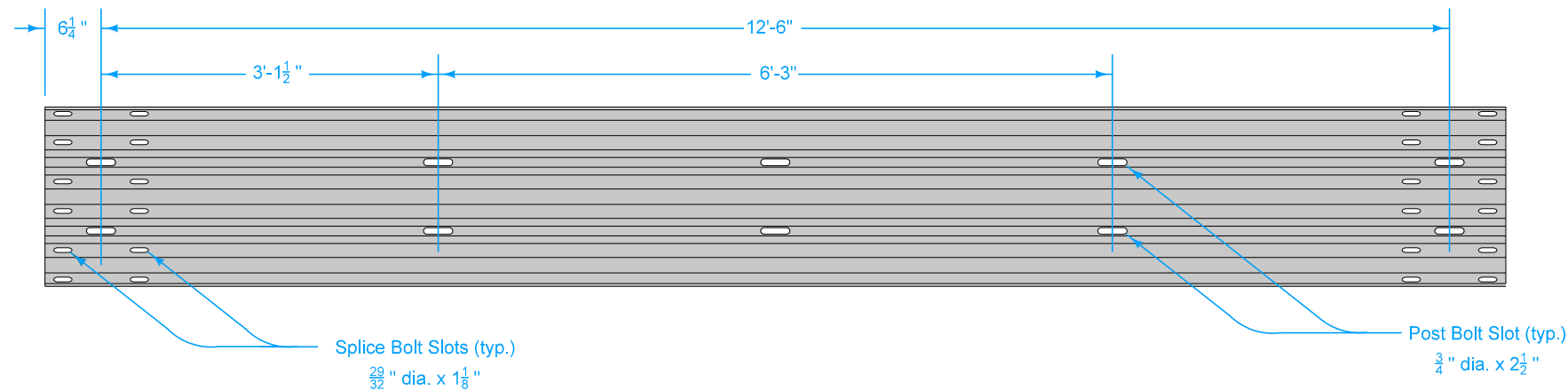
ELEVATION

W-BEAM RAIL



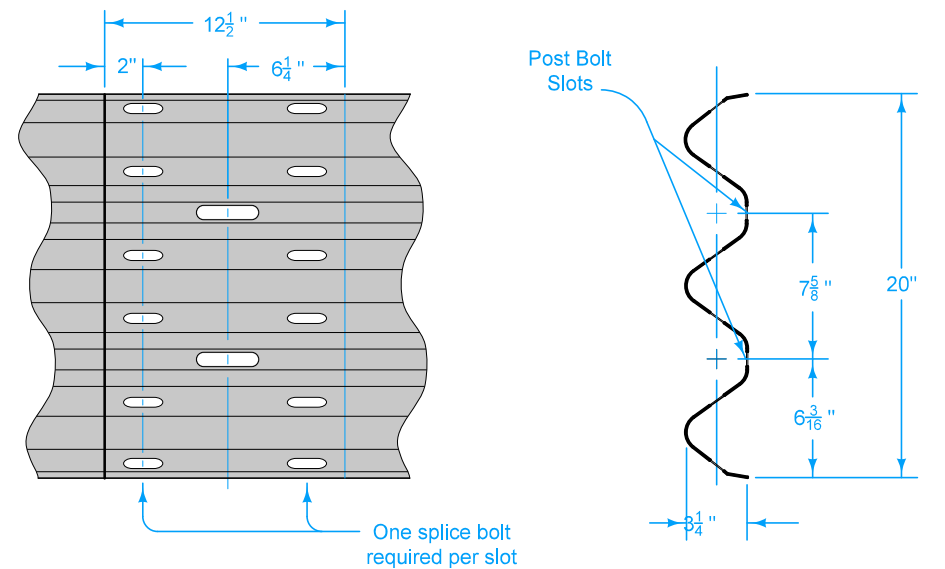
RAIL SPLICE

SECTION



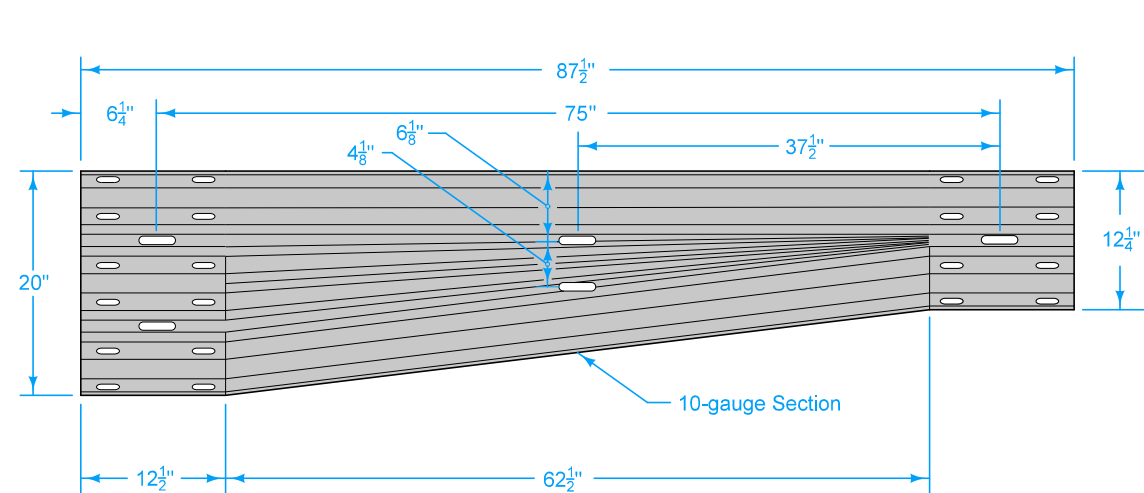
ELEVATION

THRIE-BEAM RAIL

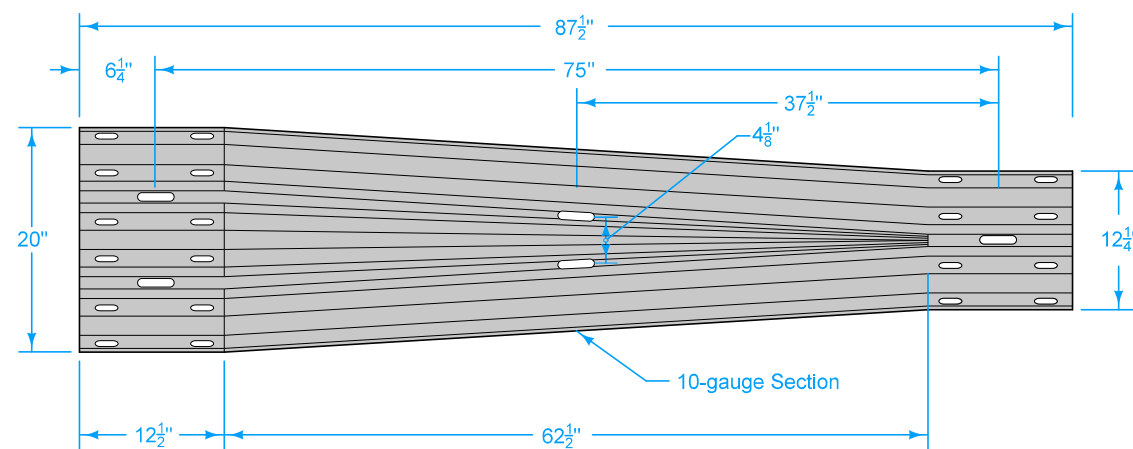


RAIL SPLICE

SECTION

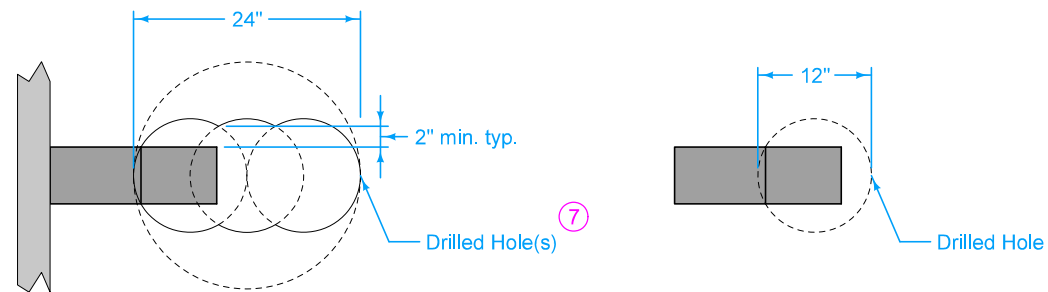
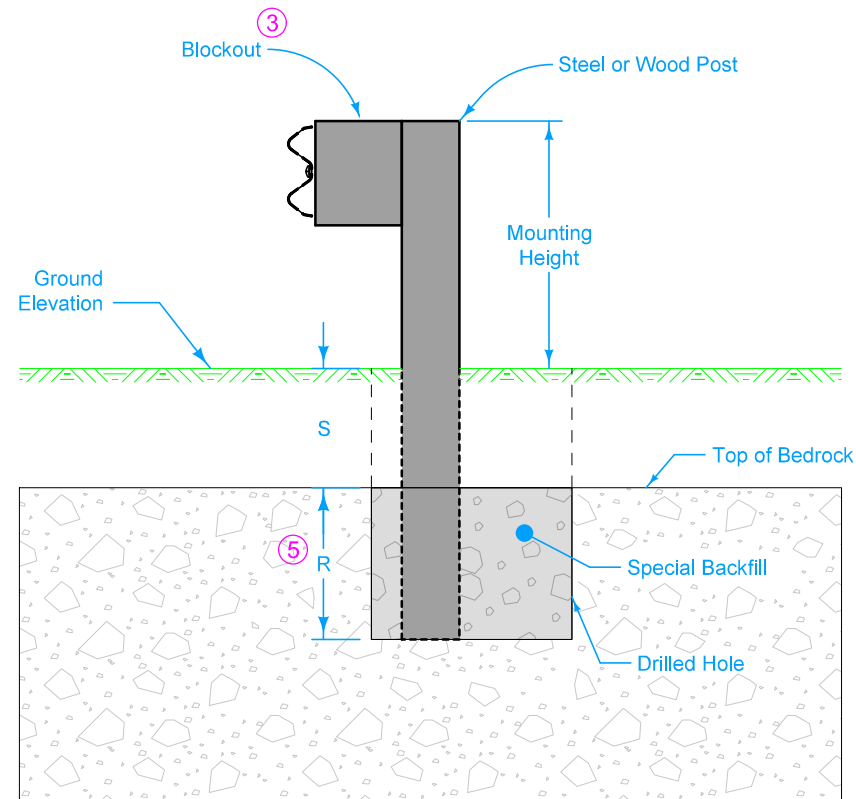


ASYMMETRICAL TRANSITION SECTION



SYMMETRICAL TRANSITION SECTION

<div>IOWA IDOT</div> <div>STANDARD ROAD PLAN</div>	REVISION	
	8	04-21-26
	BA-200	
	SHEET 3 of 4	
REVISIONS:      Added SYMMETRICAL TRANSITION SECTION detail.		
<div>Shawn Miller</div>		
APPROVED BY DESIGN METHODS ENGINEER		
STEEL BEAM GUARDRAIL COMPONENTS		

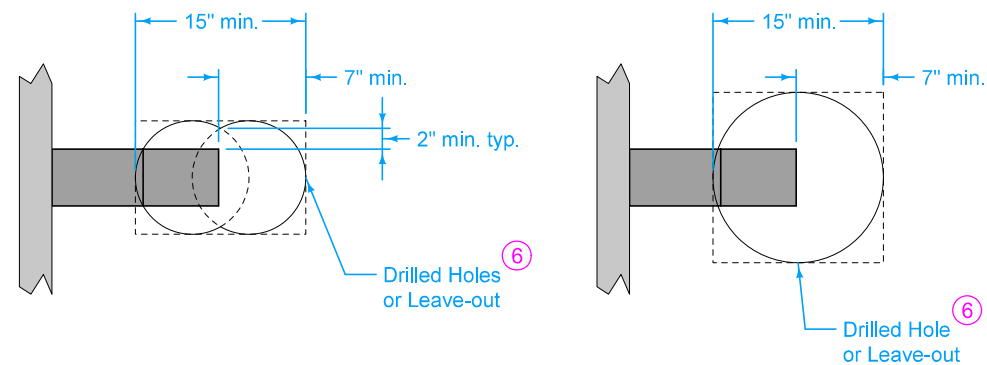
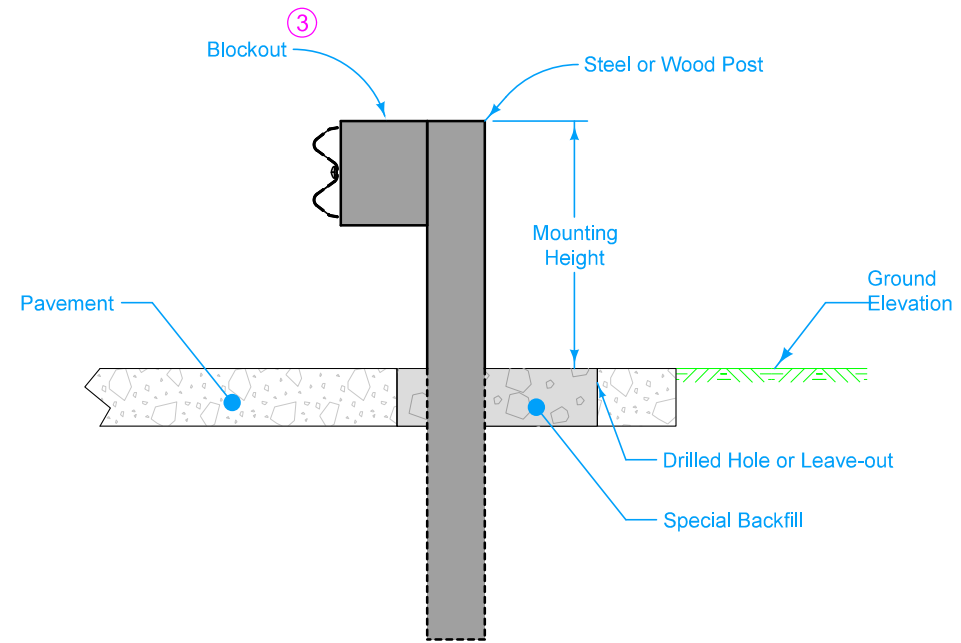


PLAN - CASE A

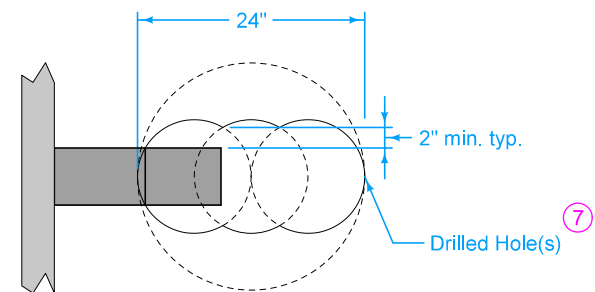
PLAN - CASE B

Post Embedment (5)		
Case	Depth to Bedrock	Minimum Depth to Drill into Bedrock
A	S = 0" to 16"	R = 24"
B	S = 16" to 52"	R = Post Length - Mounting Height - S

POST INSTALLED IN BEDROCK



PLAN - PAVEMENT THICKNESS  $\leq 8"$   
Either approach is acceptable.



PLAN - PAVEMENT THICKNESS  $> 8"$

POST INSTALLED IN PAVEMENT

Installation information applies to both wood and steel posts.

- (3) Wood or composite only. Steel blockouts will not be allowed.
- (5) Post extends to bottom of hole in all cases. Trim top of post as required and treat with preservative according to Section 4161 of the Standard Specifications.
- (6) Use a 12 inch bit with two drills or a 15 inch bit with one drill. If placing post before paving, provide required leave-out area. If placing post after paving, drill or cut required area. Leave-out may be round or square.
- (7) Use a 12 inch bit with three drills or a 24 inch bit with one drill.

IOWA DOT		REVISION	
STANDARD ROAD PLAN		8	04-21-26
		BA-200	
		SHEET 4 of 4	

REVISIONS: Added SYMMETRICAL TRANSITION SECTION detail.

*Shawn Miller*  
APPROVED BY DESIGN METHODS ENGINEER

STEEL BEAM GUARDRAIL COMPONENTS